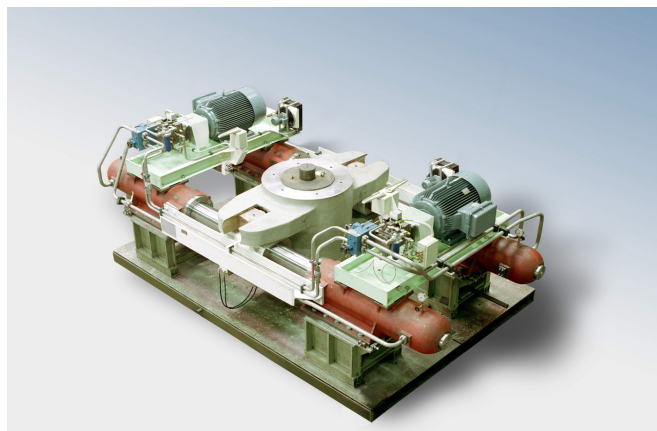


Ram type POSEIDON ST

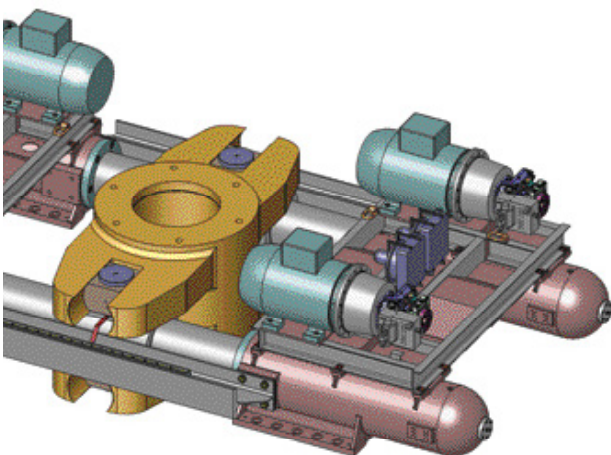


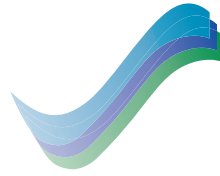
STRUCTURAL FEATURES:

- Electro-hydraulic, 4-cylinder, 2-ram type
- Compact design, pump units mounted on and completely piped with the cylinders
- Pumps with variable displacement
- Electronic synchronising for twin-rudder installation
- One-piece tiller for cone or key-cone connection
- Interconnection of the two actuators for normal operation
- In an emergency, each actuator can maintain the manoeuvrability of the ship
- All major brands of autopilot and rudder control systems can be connected

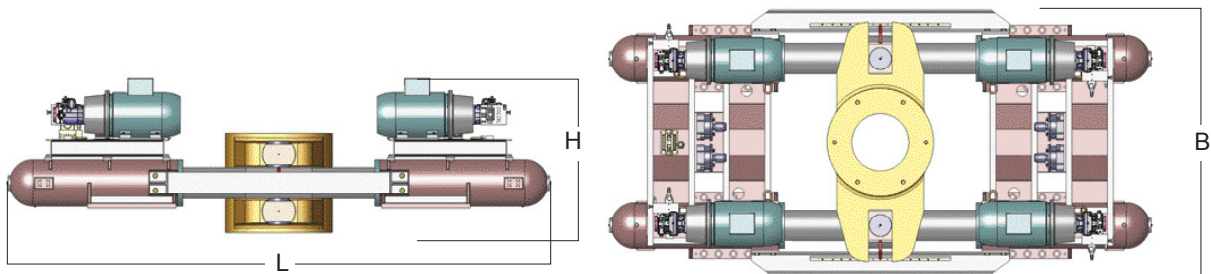
On request HATLAPA can deliver

- Rudder carrier, motor starters, alarm, automatic isolation, rudder control, rudder angle indicator systems, etc.
- Special designs are available on request





Ram type POSEIDON ST



Type		2000	2500	3000	3500	4000	6000	7000	10000
Working torque* at 35°	[kNm]	2130	2558	3111	3548	4304	6010	6988	8893
Max rudder stock diameter	[mm]	550	600	650	700	750	850	900	1000
Length	L [mm]	4700	5100	5320	5430	6060	6550	6950	7330
Width	B [mm]	2750	2800	2915	3355	3090	3500	3600	3600
Height	H [mm]	1730	1750	2100	2100	2100	2250	2000	1800
El. Motor output **	[kW]	2x96	2x117	2x145	2x160	2x190	2x265	4x155	4x196
Oil charge (approx.)	liter [l]	400	480	500	650	700	1000	1100	1250
Weight (approx.)	[kg]	17000	19000	22000	30000	30500	41000	45000	50000

* at working pressure
** acc. to IEC 92-204: duty S 6-25%