

## SAFEMATIC



Automatic isolation system

### STRUCTURAL FEATURES:

The HATLAPA SAFEMATIC complies with the latest rules and regulations of SOLAS 1974 and all leading classification societies.

Connectable to all HATLAPA ram-type steering gear allowing automatic emergency operation with two independent hydraulic systems.

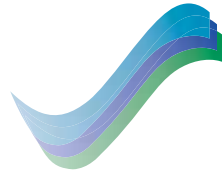
In case of pipe burst or other defects involving oil leaking, the leakage can be isolated and steering capability is maintained with two cylinders and one pump unit.

The HATLAPA SAFEMATIC detects, isolates and switches off the defective system automatically. Steering gear remains operational with the remaining system.

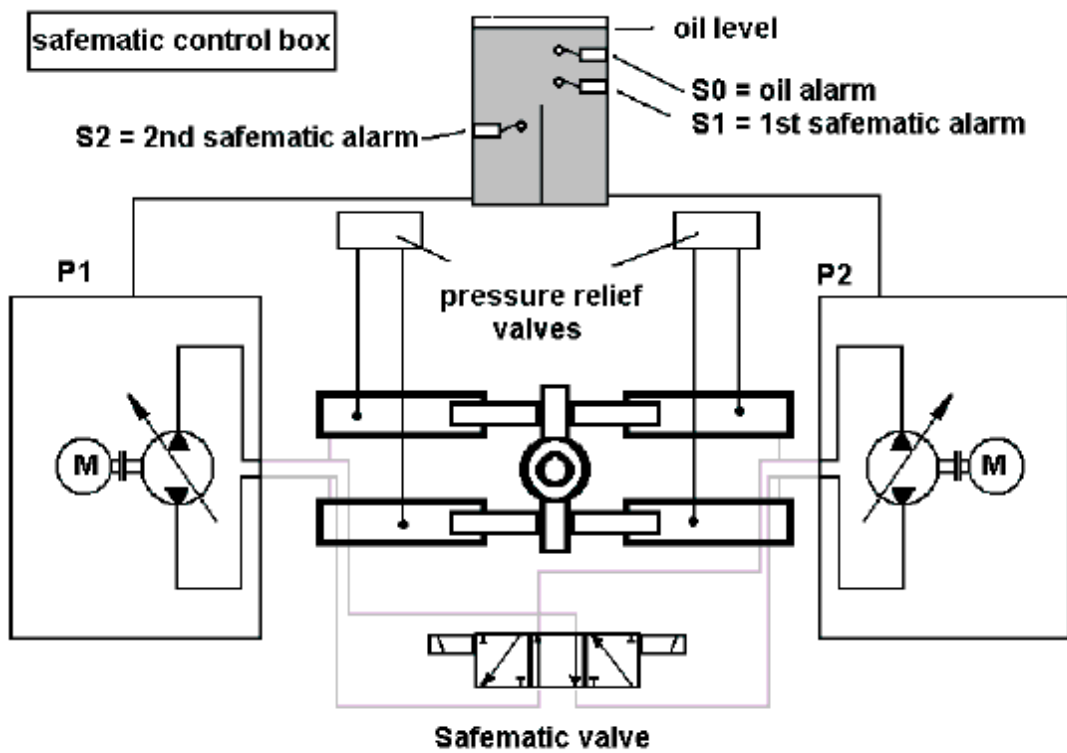
The ship's manoeuvrability is restored immediately and loss of hydraulic fluid is kept to a minimum, due to the very short time required for automatically detecting, isolating and switching over.

All HATLAPA ram-type steering gear still have their hand operated stop valves for the same purposes.





**SAFEMATIC**



- P1 = Pump 1
- P2 = Pump 2
- S0 - S2 = Oil Level Switch
- Safematic Valve = Automatic pump isolation and bypass valve